

Small Payloads Robot

ER10-2000

ER10-2000 is a small payloads robot.
Maxium payload 10 kg with maxium reach 2019 mm.

Highlights

Thanks to the new design of wrist, inertia and bearing capacity are increased by 20% with wider application scope;
Special design of robot fore arm, helps customers easily handle complex surface objects, such as painting of sanitary ware.

Applications

It could be used in handling, painting, machine tending and other applications.

Industries

Suitable for ceramics, plastic, metal parts, education and other industries.



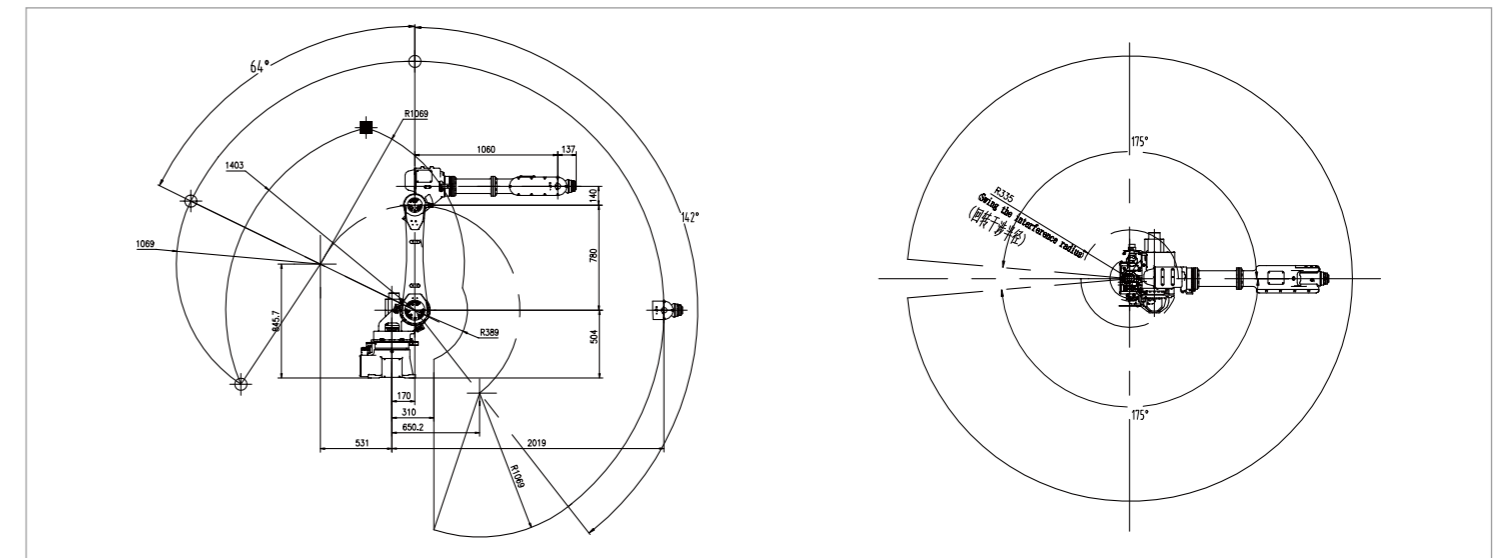
EFORT

SPECIFICATIONS

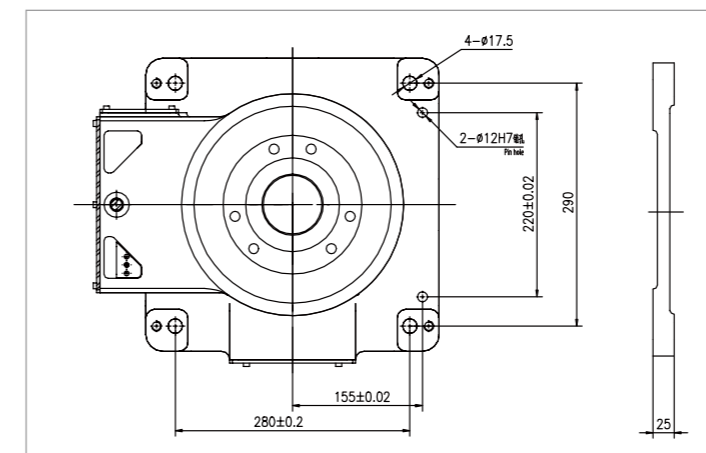
Model	ER10-2000	
Type	Articulated Type	
Controlled Axes	6 Axes	
Wrist Payload	10 kg	
Repeatability	± 0.05 mm	
Robot Weight	221 kg	
Reach	2019 mm	
Robot IP Grade	IP67 (Wrist) / IP54 (Others)	
Cabinet IP Grade	IP54	
Drive Method	Electric servo drive by AC servo motor	
Installation	Floor, Upside-down, Wall mount	
Environment Requirements	Ambient Temperature	0~45 °C
	Humidity	< 80%/40°C (No Condensation)
	Vibration Acceleration	4.9 m/s ² (< 0.5 G)

Allowable Torque	J4	22 N.m
	J5	22 N.m
	J6	16 N.m
Allowable Moment of Inertia	J4	1 kg.m ²
	J5	1 kg.m ²
	J6	0.3 kg.m ²
Maximum Speed	J1	170°/sec
	J2	150°/sec
	J3	146°/sec
	J4	360°/sec
	J5	360°/sec
	J6	550°/sec
Motion Range	J1	± 175°
	J2	+64°/- 142°
	J3	+165°/- 81°
	J4	± 178°
	J5	± 128°
	J6	± 720°

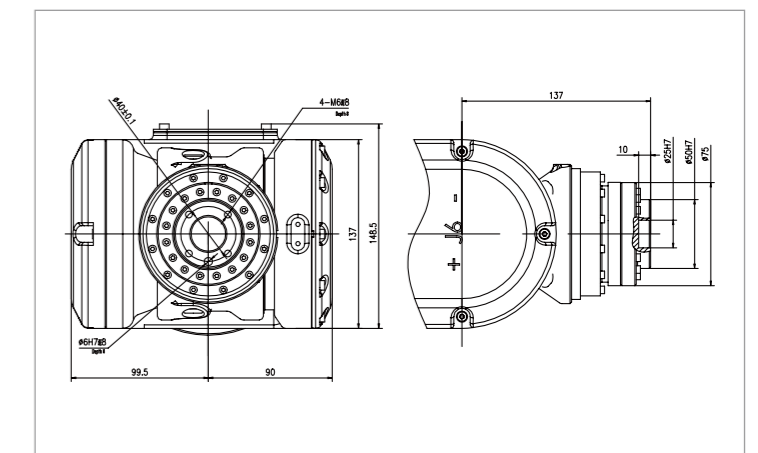
OPERATING SPACE



BASE MOUNTING SIZE



END FLANGE MOUNTING SIZE



EFORT INTELLIGENT EQUIPMENT CO.,LTD.

PHONE: (00 86) 400-052-8877

ADDRESS: No.96 East WanChun Road, JiuJiang Economic Development Zone, Wuhu, Anhui, China

WWW.EFORT.COM.CN