

Small Payloads Robot

ER10-1600

ER10-1600 is a small payloads robot.
Maxium payload 10 kg with maxium reach 1640 mm.

Highlights

A comprehensive arc welding application software can be integrated to meet the requirements of automatic welding in various scenarios; Thanks to the high stiffness transmission design and advanced trajectory algorithm, the improved robot accuracy performance helps customers to face variety of application scenarios.

Applications

It could be used in handling, machine tending, arc welding and other applications.

Industries

Suitable for plastic, metal parts and other industries.



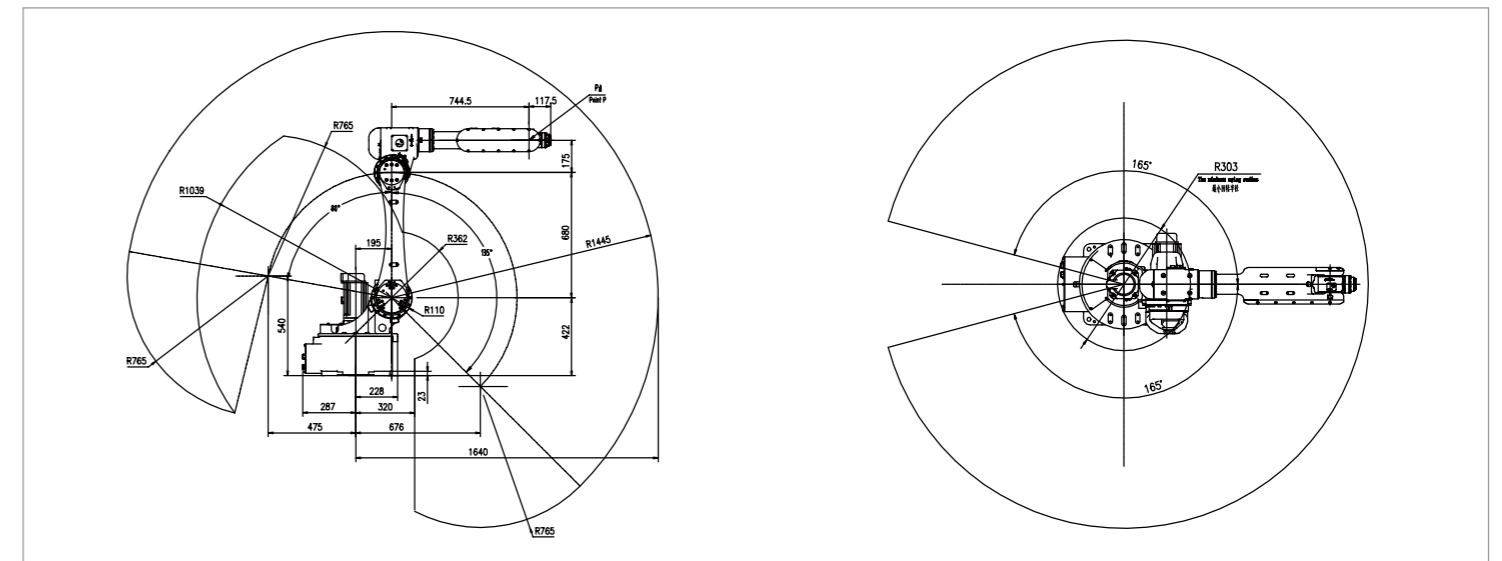
EFORT

SPECIFICATIONS

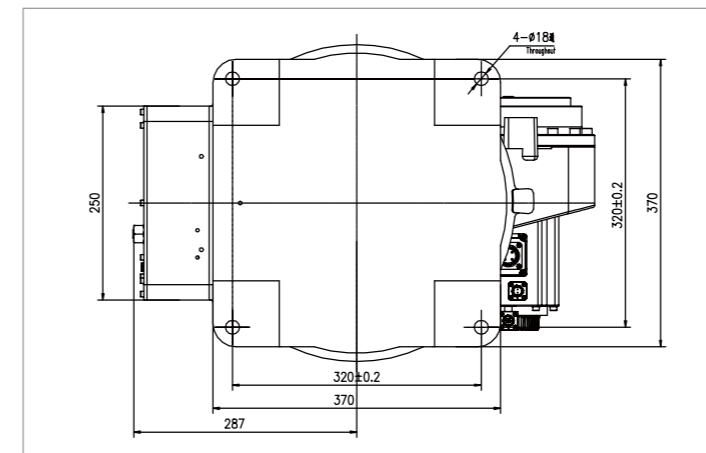
Model	ER10-1600	
Type	Articulated Type	
Controlled Axes	6 Axes	
Wrist Payload	10 kg	
Repeatability	± 0.05 mm	
Robot Weight	185 kg	
Reach	1640 mm	
Robot IP Grade	IP67 (Wrist) / IP54 (Others)	
Cabinet IP Grade	IP54	
Drive Method	Electric servo drive by AC servo motor	
Installation	Floor, Upside-down, Wall, Angle mount	
Environment Requirements	Ambient Temperature	0~45 °C
	Humidity	< 80%/40°C (No Condensation)
	Vibration Acceleration	4.9 m/s ² (< 0.5 G)

Allowable Torque	J4	20 N.m
	J5	20 N.m
	J6	10 N.m
Allowable Moment of Inertia	J4	0.625 kg.m ²
	J5	0.625 kg.m ²
	J6	0.2 kg.m ²
Maximum Speed	J1	170°/sec
	J2	160°/sec
	J3	180°/sec
	J4	330°/sec
	J5	360°/sec
	J6	600°/sec
Motion Range	J1	± 165°
	J2	+80°/- 135°
	J3	+163°/- 75°
	J4	± 180°
	J5	± 130°
	J6	± 360°

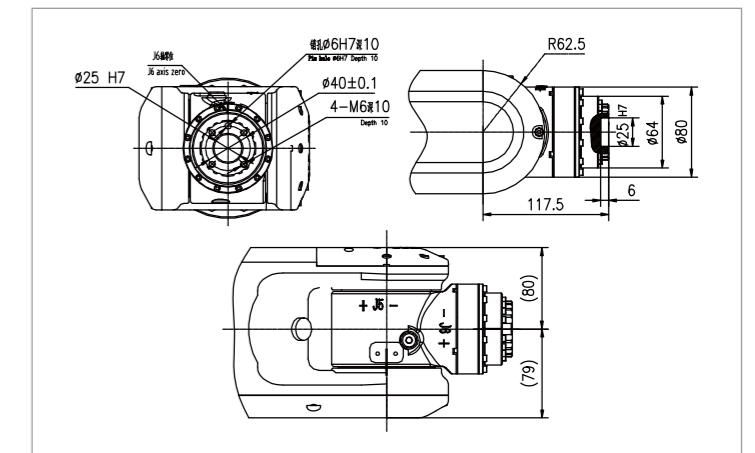
OPERATING SPACE



BASE MOUNTING SIZE



END FLANGE MOUNTING SIZE



EFORT INTELLIGENT EQUIPMENT CO.,LTD.

PHONE: (00 86) 400-052-8877

ADDRESS: No.96 East WanChun Road, JiuJiang Economic Development Zone, Wuhu, Anhui, China

WWW.EFORT.COM.CN